

Distributed by
802 Cabinetry of Boston 353 Howard St Brockton, MA 02302
www.802Cabinetry.com
857-810-0888

Distributed by
802 Cabinetry of Vermont 364 Swanton Rd St Albans, VT 05478
www.802Cabinetry.com
1-800-985-5931

Distributed by
NEKB Supply Corp 2735 Shelburne Rd Shelburne, VT 05482
www.nekbsupplycorp.com
747-240-4469

Distributed by
10% Cabinetry 7757 Union Centre Blvd W Chester Town, OH 45069
www.10percentcabinetry.com
513-297-2099

Distributed by
Sunique International 2045 Westgate Dr Ste130 Carrollton, TX 75006
www.suniquellc.com
469-206-3904

802 CABINETRY
MAKING THE DIFFERENCE



C A B I N E T R Y

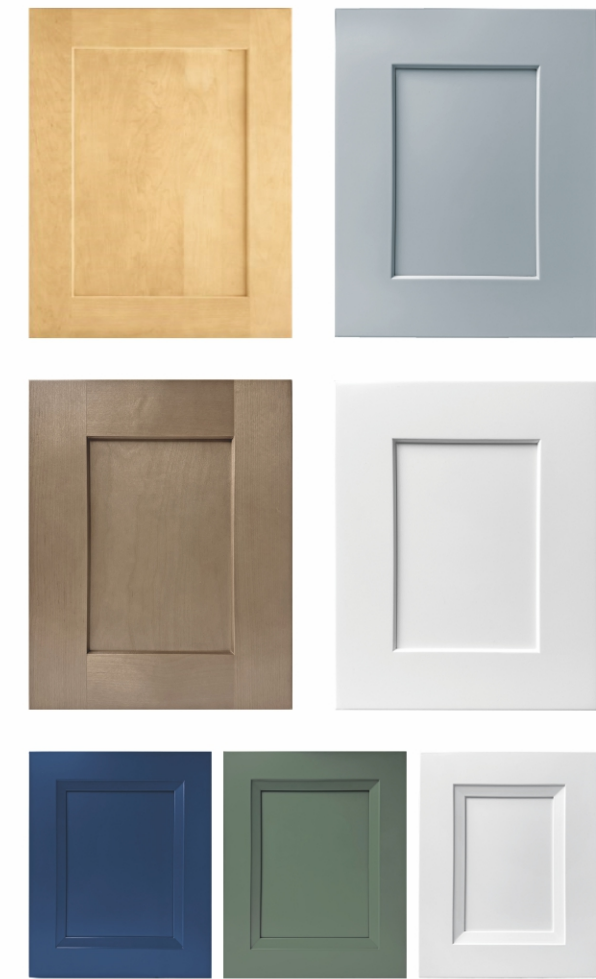
2025
CATALOG

Discover
802 Cabinetry



OUR HISTORY

802 CABINETRY



802 Cabinetry, based in the heart of Vermont, is a distinguished company that brings a touch of global craftsmanship to the Green Mountain State and the world. Specializing in high-quality cabinets, our brand is synonymous with exquisite design, durability, and a commitment to customer satisfaction.

Our journey began with a passion for woodworking and a dedication to providing homeowners, designers, and architects with exceptional cabinetry that transcends borders. We take pride in our ability to source the finest materials globally, ensuring that every cabinet meets the highest standards of quality.

We draw inspiration from the natural beauty of the Green Mountain State and are actively involved in local initiatives that support the arts, craftsmanship, and environmental conservation. The story of this cabinetry company is woven into the fabric of the Green Mountain State, reflecting not only the beauty of its landscapes but also the enduring spirit of those who call Vermont home.

FEATURE ADVANTAGE BENEFIT

CUSTOMER SATISFACTION IS
OUR GREATEST ACHIEVEMENT.

EASIER

ORDERING
SUPPORTING

FASTER

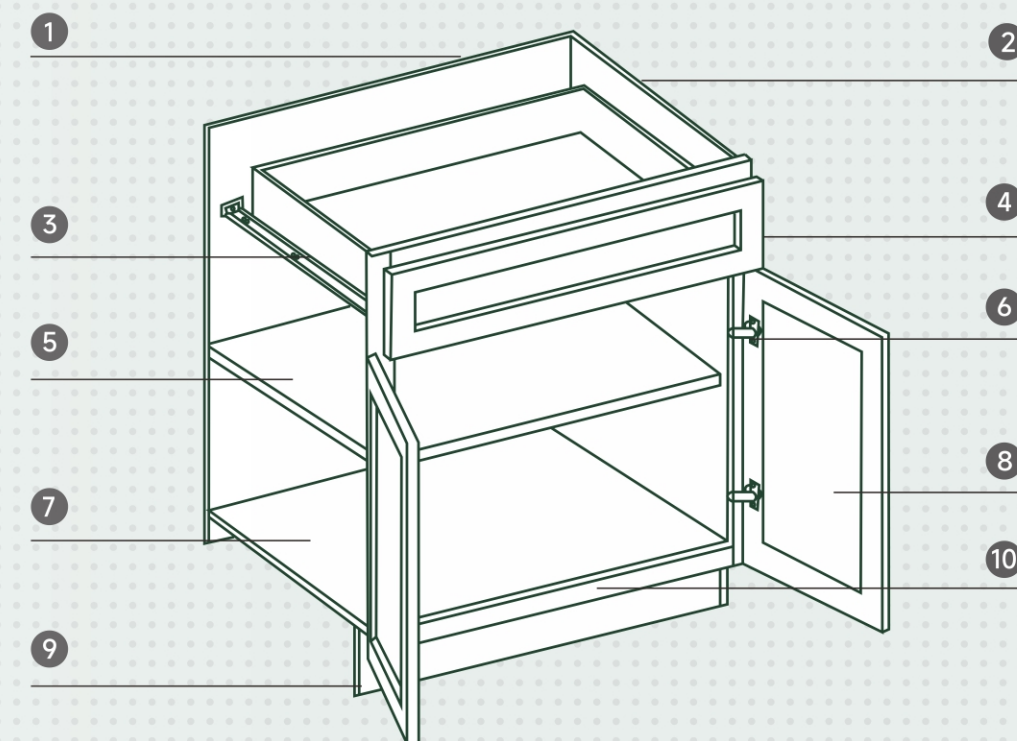
ASSEMBLE
LEAD TIME

STRONGER

SIDE PANEL
STRUCTURE

MAKING THE DIFFERENCE

CABINET SPECIFICATION



1 BACK PANEL

3/4" Thick Back With Pre-drill
Pocket

2 SIDE PANEL

5/8" Thick Premium Grade
Plywood

3 GLIDE

Undermount Full Extension Soft
Close Drawer Glides

4 DRAWER

3/4" Dovetail Drawer Box With
Insert Stoppers

5 SHELF

3/4" Thick, 18" Deep With
Metal Shelf Pin

6 HINGES

6-Way Adjustable Hinge With
Soft Close Feature

7 BOTTOM

UC Coated Natural Plywood
Interior

8 DOOR

Solid Wood For Stain Door
Hdf For Painted Door

9 TOE KICK

5/8" Plywood With Coated
Matching Exterior

10 FACE FRAME

3/4" x 1 1/2" Hardwood Face
Frame

STOWE WHITE

STOWE SERIES

DESCRIPTION

The Stowe White style, a classic and timeless design, embodies simplicity, functionality, and elegance. This style of cabinetry is a popular choice for kitchens and other spaces, known for its clean lines, versatility, and ability to complement a variety of design aesthetics.



Inspiration



Specifications



Pictures are for illustrative purposes only



01 STOWE SERIES



Pictures are for illustrative purposes only

DESCRIPTION

Stowe Light Gray is a painted finish that gives the kitchen a modern industrial look without feeling too dark. This style offers an impressive minimalist masterpiece with enduring appeal.



Inspiration



Specifications

STOWE SERIES

STOWE LIGHT GRAY



STOWE NATURAL

STOWE SERIES

DESCRIPTION

The Stowe Natural style has a timeless and enduring quality. The inherent warmth and authenticity of the natural wood create a design that can transcend changing trends and remain a classic choice for homeowners seeking lasting elegance.



Inspiration



Specifications



Pictures are for illustrative purposes only

STOWE DRIFTWOOD

STOWE SERIES

DESCRIPTION

The Stowe Driftwood cabinet captures the essence of coastal living and rustic elegance, drawing inspiration from weathered wood and the natural beauty of driftwood. This unique cabinet style adds a touch of organic charm to any space, blending coastal aesthetics with a sense of well-worn, relaxed sophistication.



Inspiration



Specifications



Pictures are for illustrative purposes only



802

BOLTON
SERIES



DESCRIPTION

Bolton White style is a classic and timeless choice for kitchen and bathroom cabinetry. It's characterized by its clean and bright appearance, making it a popular option for a wide range of interior design themes. Bolton White exude classic elegance that stands the test of time. They can suit both contemporary and traditional design schemes, offering a timeless quality that doesn't go out of style.



Inspiration



Specifications

STOWE SERIES

BOLTON WHITE



BOLTON GREEN

STOWE SERIES

DESCRIPTION

The Bolton Green represent a harmonious fusion of classic sophistication and nature's timeless beauty. The muted and tranquil hue of green exudes a sense of tranquility and rejuvenation, making it a popular choice for kitchens and living spaces.



Inspiration



Specifications



BOLTON BLUE

STOWE SERIES

DESCRIPTION

The Bolton Blue style is the epitome of sophistication and versatility. The deep, rich shade of blue brings an air of timeless elegance to kitchens and living spaces, offering a modern twist on a classic color. The color choice brings a modern edge to classic designs, creating a space that feels both sophisticated and up-to-date.



Inspiration



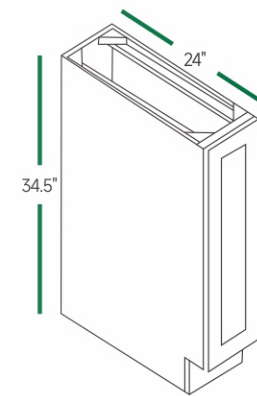
Specifications



Pictures are for illustrative purposes only

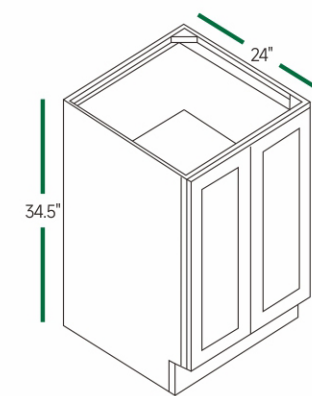
CABINET CATALOG

● BASE CABINETS (34 1/2" HEIGHT, 24" DEEP)



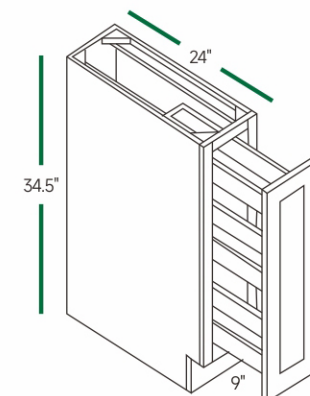
FULL DOOR BASE

BF0924 | BF1224 | BF1524
BF1824 | BF2124



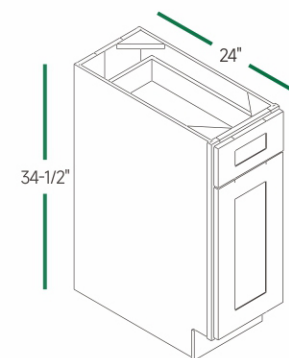
FULL DOOR BASE

BF2424 | BF2724 | BF3024
BF3324 | BF3624



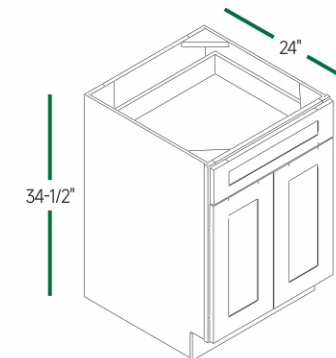
FULL DOOR BASE

BF06-P0 | BF09-P0



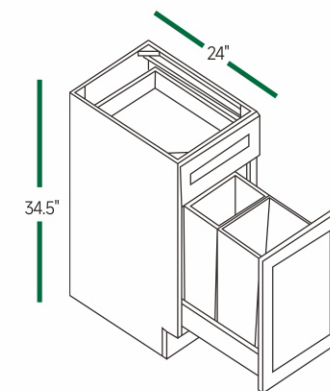
BASE SINGLE DOOR

B12 | B15 | B18 | B21



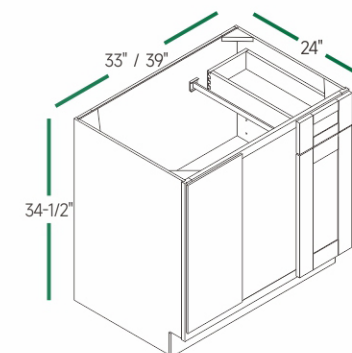
BASE DOUBLE DOOR

B24 | B30 | B36
B27 | B33



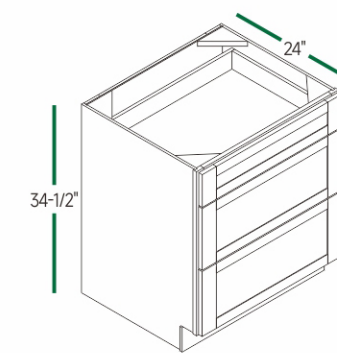
BASE WASTE BASKET

B18TR



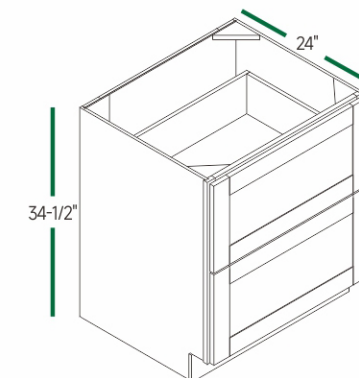
BLIND BASE

BBC39/42 | BBC42/45



3 DRAWER BASE

DB12 | DB15 | DB18
DB21 | DB24 | DB27
DB30 | DB33 | DB36

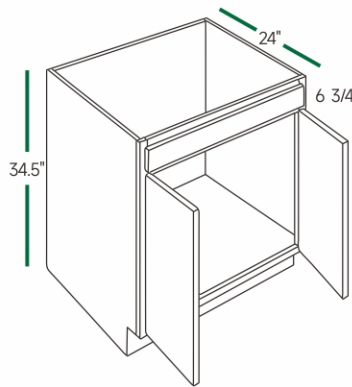


2 DRAWER BASE

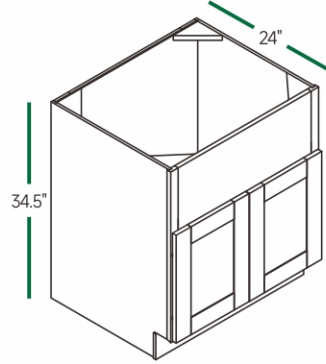
DB24-2 | DB30-2

CABINET CATALOG

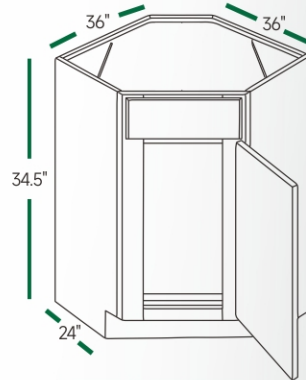
● BASE CABINETS (34 1/2" HEIGHT, 24" DEEP)



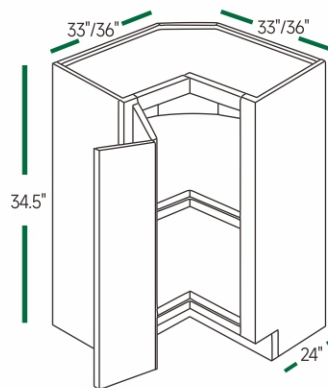
SINK BASE
SB24 | SB30 | SB36
SB27 | SB33



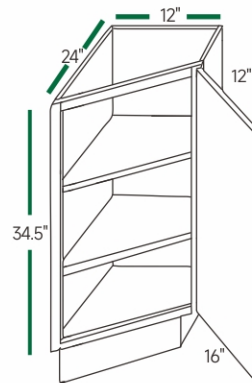
FARMER SINK
FS33 | FS36



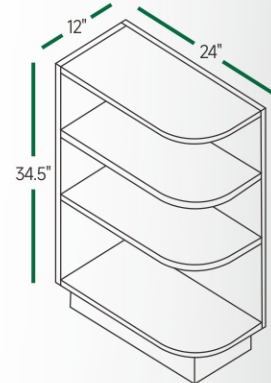
DIAGONAL SINK BASE
DSB 36



LAZY SUSAN
LSB33 | LSB36

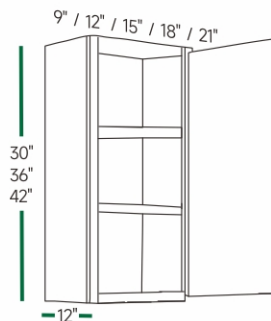


TRANSITIONAL BASE
BT12

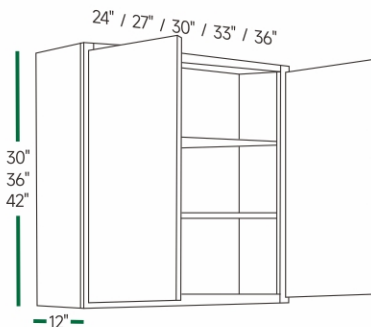


OPEN SHELF END
BES12

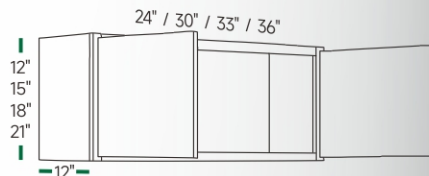
● WALL CABINETS (12" DEEP)



1 DOORS
W0930 | W0936 | W0942
W1230 | W1236 | W1242
W1530 | W1536 | W1542
W1830 | W1836 | W1842
W2130 | W2136 | W2142

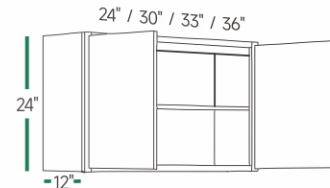


2 DOORS
W2430 | W2436 | W2442
W2730 | W2736 | W2742
W3030 | W3036 | W3042
W3330 | W3336 | W3342
W3630 | W3636 | W3642

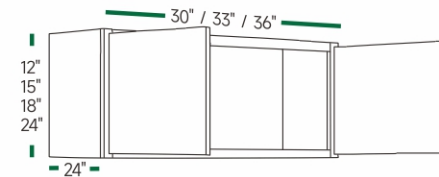


2 DOORS
W3012 | W2415 | W2418 | W3021
W3312 | W3015 | W3018
W3612 | W3315 | W3318
| W3615 | W3618

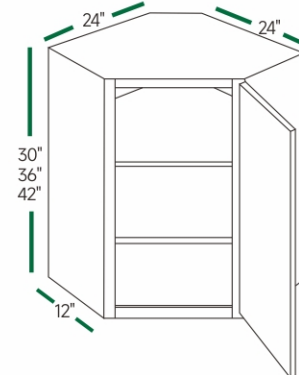
● WALL CABINETS (12" DEEP)



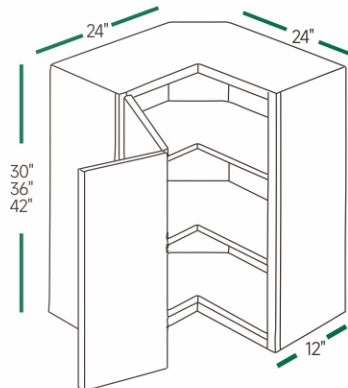
2 DOORS
W2424
W3024
W3324
W3624



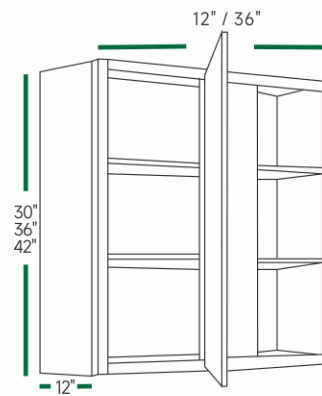
2 DOORS
W301224 | W301524 | W301824 | W302424
W331224 | | W331824 | W332424
W361224 | | W361824 | W362424



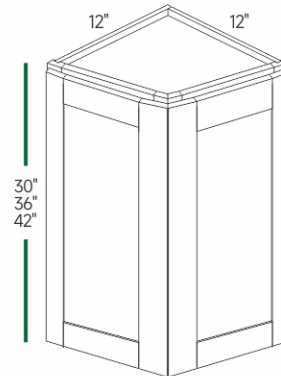
WALL DIAGONAL CORNER
WDC2430 | WDC2436 | WDC2442



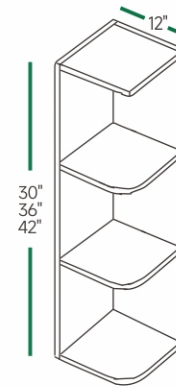
PIE CUT CORNER
WPC2430 | WPC2436 | WPC2442



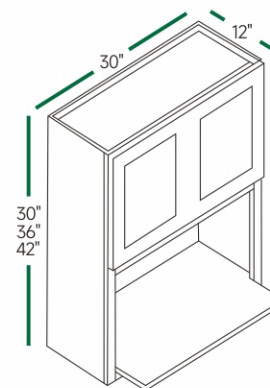
BLIND CORNER
WBC2430 | WBC2436 | WBC2442
WBC3630 | WBC3636 | WBC3642



WALL ANGLE END
WAE1230 | WAE1236 | WAE1242



OPEN END
OE1230 | OE1236 | OE1242



WALL MICROWAVE
WM3030 | WM3036 | WM3042

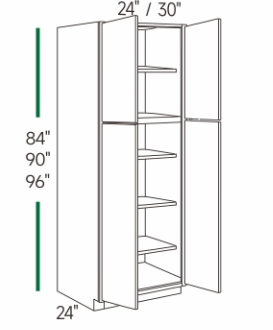
CABINET CATALOG

TALL CABINETS



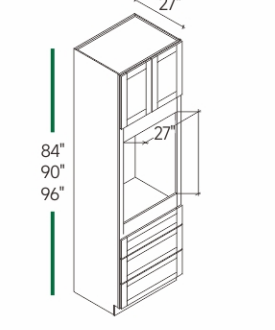
PANTRY 2 DOORS

TP128424 | TP129024 | TP129624
TP158424 | TP159024 | TP159624
TP188424 | TP189024 | TP189624



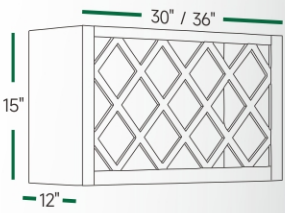
PANTRY 4 DOORS

TP242484 | TP242490 | TP249624
TP302484 | TP302490 | TP309624



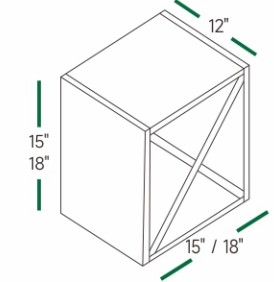
OVEN CABINET

OC3384 | OC3390 | OC3396



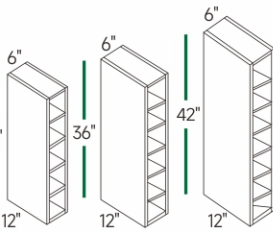
WINE RACK

WR3015 | WR3615



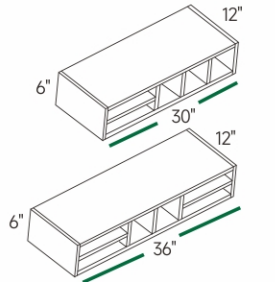
WINE RACK

WR1515 | WR1818



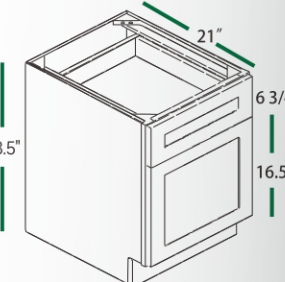
WINE CUBE

WC0630 | WC0636 | WC0642



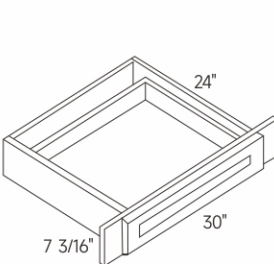
WALL ORGANIZER

WO306 | WO366



FILE DRAWER BASE

FD1821



KNEE DRAWER

BKD30 | KD30

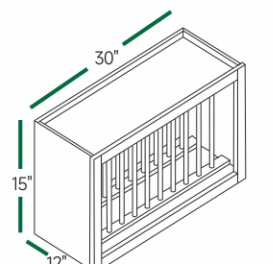
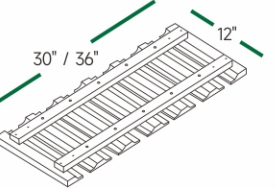


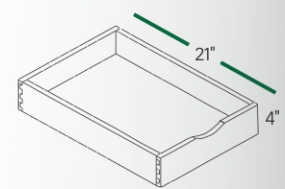
PLATE RACK

PR3015



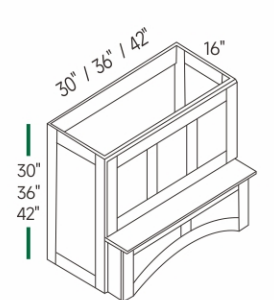
GLASS HOLD

GL-30 | GL-36



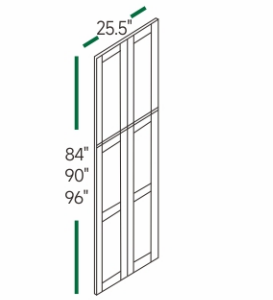
ROLL-OUT TRAY

RD15 | RD24 | RD33
RD18 | RD27 | RD36
RD21 | RD30



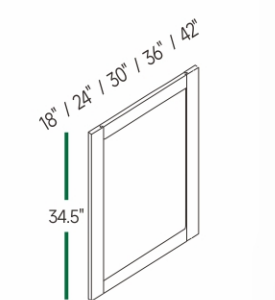
CUSTOM HOOD

RHA3030 | RHA4230
RHA3630 | RHA4236
RHA4242



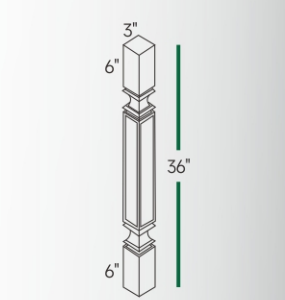
PANEL DOOR

WP-T84 | WP-T90 | WP-T96



PANEL DOOR

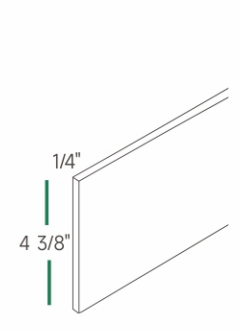
WP-BASE18 | WP-W30
WP-BASE24 | WP-W36
WP-W42



POST

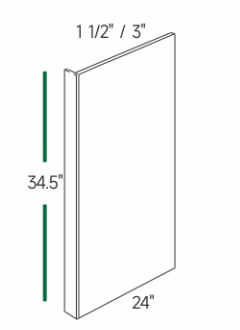
SP336

ACCESSORIES



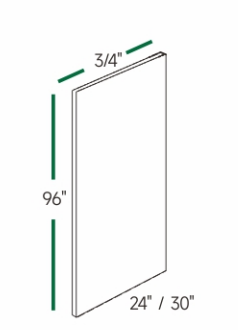
TOE KICK

TK8



DISHWASHER PANEL

DWR1 | DWR3



REFRIGERATOR PANEL

REP2496-1 1/2 | REP3096-1 1/2

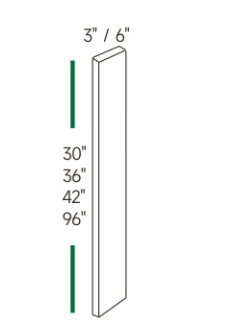
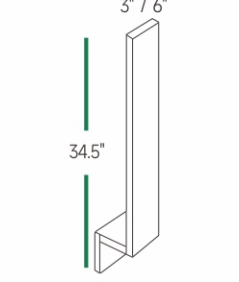


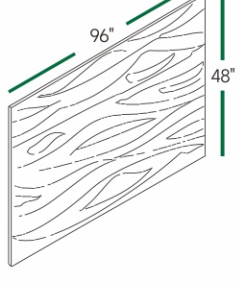
PLATE RACK

WF330 | WF630 | WF396
WF336 | WF636 | WF696
WF342 | WF642



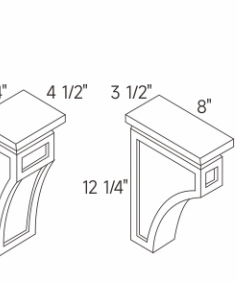
BASE FILLER

BF3 | BF6



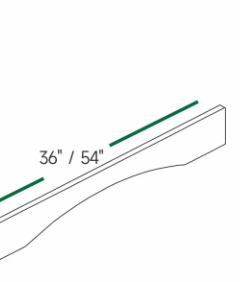
PANEL

PLY-48x96x1/4
PLY-48x96x3/4



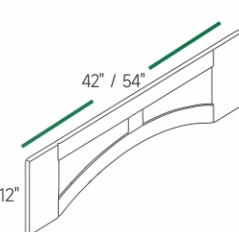
CORBEL

CMCB | CML



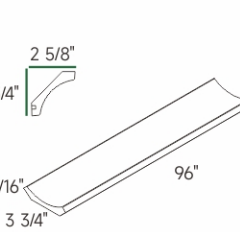
VALANCE

VAR36 | VAR54



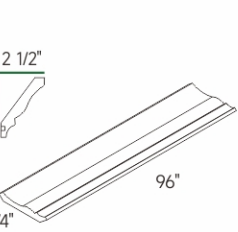
VALANCE

VARP42 | VARP54



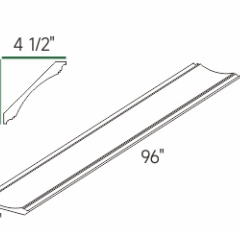
MOLDING

CM4



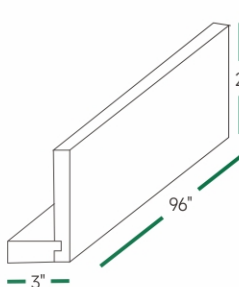
MOLDING

CM6



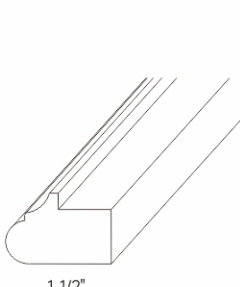
MOLDING

CM7



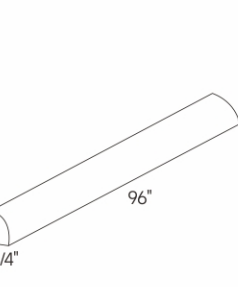
MOLDING

CMR2 | CMR4



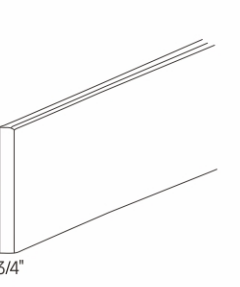
LIGHT RAIL MOLDING

LRM



QUARTER ROUND MOLDING

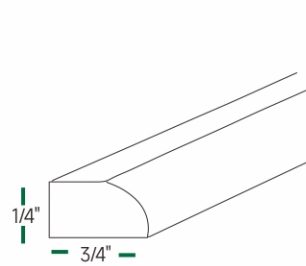
QRM



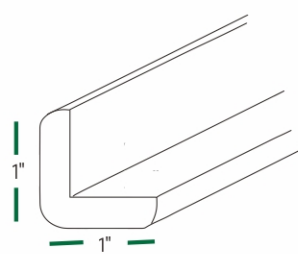
BASE BOARD MOLDING

BBM5

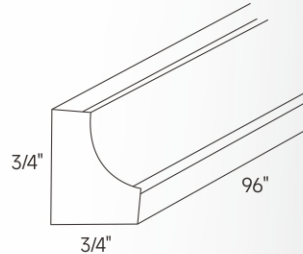
CABINET CATALOG



SIMPLE SCRIBE
SM8-S

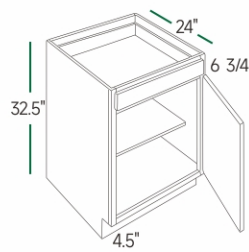


OUTSIDE CORNER
OCM8

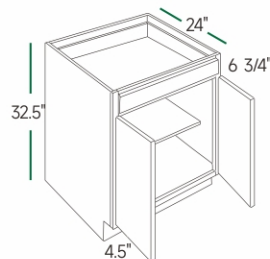


INSIDE CORNER
ICM8

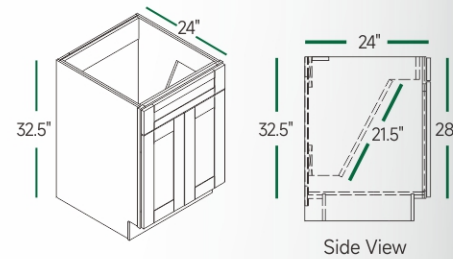
ADA CABINETS (32 1/2" HEIGHT, 4 1/2" TOE KICK)



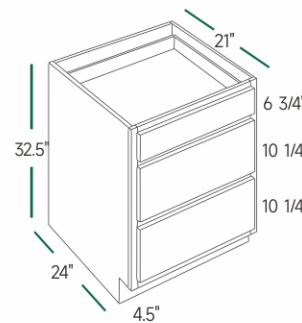
BASE SINGLE DOOR
ADA-B12 | ADA-B15
ADA-B18



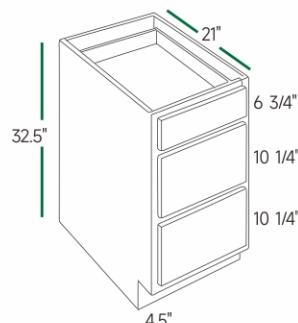
BASE DOUBLE DOOR
ADA-B24 | ADA-B30
ADA-B36



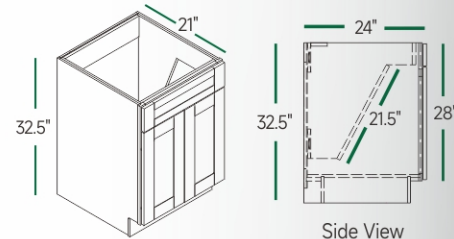
SINK BASE
ADA-SB30 | ADA-SB36



3 DRAWER BASE
ADA-DB15 | ADA-DB24

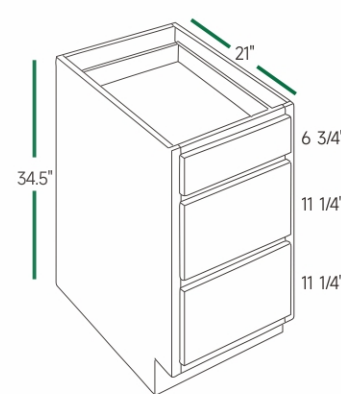


VANITY DRAWER BASE
ADA-VDB15

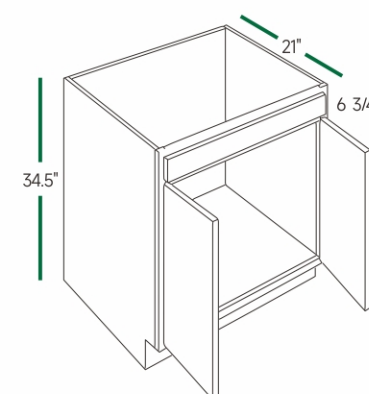


VANITY SINK BASE
ADA-VSB30

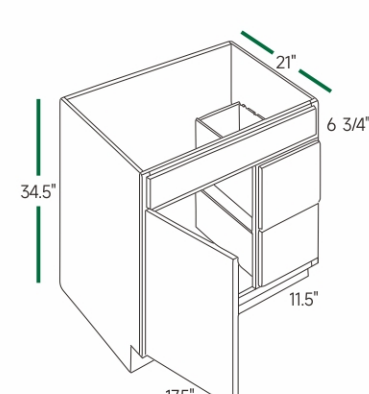
BATHROOM VANITIES (34 1/2" HEIGHT, 21" DEEP)



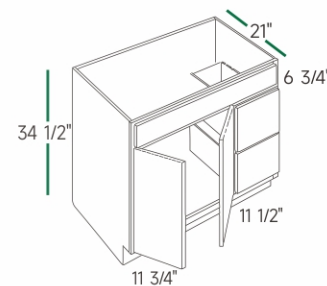
VANITY DRAWER BASE
VDB1221 | VDB1521
VBD1821



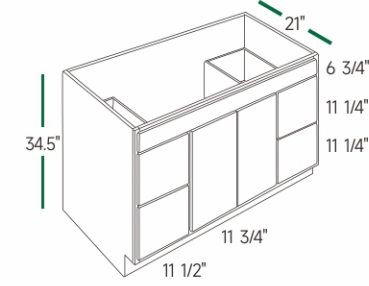
VANITY SINK BASE
VSB2421 | VSB3021
VSB3621



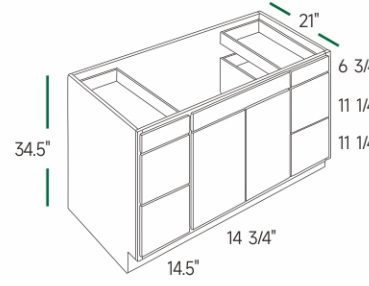
BATHROOM VANITY
VSD3021 L/R



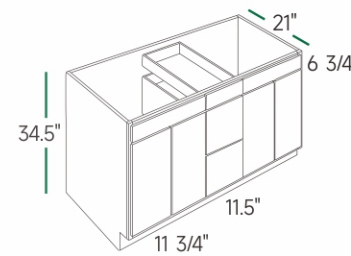
BATHROOM VANITY
VSD3621 L/R



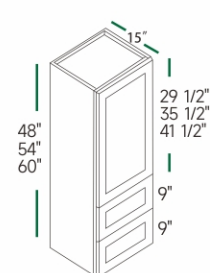
BATHROOM VANITY
VSB4821



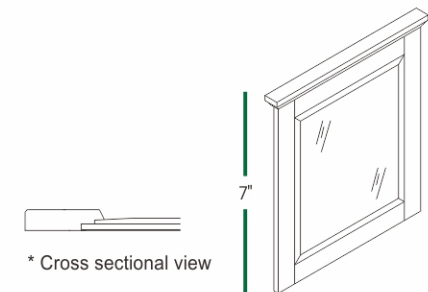
BATHROOM VANITY SINGLE
VSD6021 SINGLE



BATHROOM VANITY DOUBLE
VSD6021 DOUBLE



TALL CABINET
WD1848 | WD1854
WD1860



MIRROR DOOR
M2427 | M3027

* If you couldn't find the size you need, please don't hesitate to contact us.

Commitment to Sustainability

Small actions by citizens make a big difference. Our contribution is offering sustainable designs that enhance quality of life.



EPA TSCA Title VI Compliant

In efforts of constantly striving to improve the quality of our products, 802 Cabinetry has made a commitment to ensure that all of our MDF and Plywood products are certified under Environmental Protection Agency's (EPA) Toxic Substance Contract Act (TSCA) Title VI regulations. EPA TSCA Title VI Compliant was established to regulate the chemical emissions produced by composite wood products. This regulation reduces the exposure to formaldehyde in the air indoors.

5 Year Limited Warranty

802 Cabinetry stands behind the quality of its products with a comprehensive warranty, ensuring freedom from defects in both material and workmanship for a duration of five years. In the event of an eligible claim, 802 Cabinetry reserves the right to remedy the issue through repair or replacement, at its discretion.

It is important to note that this warranty does not extend to instances where items have been improperly stored or installed. Additionally, certain exclusions apply, including the costs associated with removing warranted material or installing replacement material, natural variations and aging inherent in wood, and damage resulting from misuse, abuse, negligence, or unauthorized modification.

Furthermore, this warranty specifically excludes products purchased without finish. Prior to any returns, replacements, or repairs, written consent from 802 Cabinetry is required, and some replacement parts may differ from the originals due to availability.

This warranty represents the sole guarantee provided by 802 Cabinetry, superseding all other warranties, whether express or implied, including any implied warranties of merchantability and fitness for a particular purpose. Labor charges for material removal or installation, as well as any incidental or consequential damages, are not covered. 802 Cabinetry disclaims any additional liability associated with the sale of its products.

Notably, certain conditions are not covered under this warranty:

- 1 Natural aging or darkening of wood color, wood knots, inherent growth characteristics, or variations in wood, which are considered natural attributes rather than defects.
- 2 Wear and tear, damage, or defects resulting from misuse, abuse, negligence, alteration, non-residential use, improper storage, or exposure to non-controlled environments.
- 3 Installation of heating vents under or in front of cabinets.
- 4 Use of any product in conjunction with 802 Cabinetry products.
- 5 Final sales or clearance items are not eligible for warranty coverage.

Regarding special considerations for doors, purchasers are required to allow doors exhibiting warping or panel shrinkage of 1/4" or less to hang for one season (spring) before requesting replacement. Typically, doors will return to their normal position once acclimated to temperature and humidity conditions. It is essential to ensure proper installation before initiating a replacement claim.

For assistance with warranty claims, customers are encouraged to contact their local authorized 802 Cabinetry dealer.

